

DEDA 9157 02 47

Vinyle compact sur support intissé renforcé  
Compact vinyl on high-tear non-woven backing / Type II vinyl  
Vinilo compacto sobre soporte no tejido reforzado



470 g/m<sup>2</sup>



Résistant aux impacts  
Impact resistant  
Resistente a los impactos



Super lessivable-brossable  
Extra washable-scrubbable  
Extra lavable y cepillable



Colle au mur  
Glue on the wall  
Cola en la pared



DOP-CPR-VIGD-14



ISO 9001



25 ml x 1,06 m



Euroclass B s2 d0  
ATSME\_84 Class A  
IMO FTP CODE 2010  
part 5



ACOUSTIC  
α<sub>w</sub> 0,10\*



Raccord libre  
Free match  
Empalme libre



\*Conditions d'essai et supports détaillés dans le rapport / Tests conditions and more details on substrate in the report / Condiciones del ensayo y soportes detallados en el informe : PEUTZ / N° A3151 - 1E - RA

**texdecor**

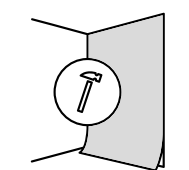
Collection : Dédale  
Classeur / Binder :  
Contract vinyl wallcovering  
Publication : 2021.01

**Siège social - Head office Texdecor**  
2, rue d'Hem, 59780 Willems, FRANCE  
Tel : +33 (0)3 20 61 78 37 - Fax : + 33 (0)3 20 61 75 64  
[www.texdecor.com](http://www.texdecor.com)

DEDAFEU

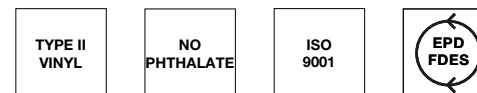
**texdecor**

Acoustic and decorative solutions



CONTRACT VINYL  
WALLCOVERING

Dédale



DEDA 9157 03 97

Dédale

UN LABYRINTHE D'ENTRELACS CONTEMPORAINS,  
UN ENNOBLISSEMENT MÉTALLISÉ SUBLIMANT LA STRUCTURE.

A MAZE OF MODERN INTERLACING,  
A METALLIC FINISH TO SUBLIME THE STRUCTURE.

UN LABERINTO DE LACERIA CONTEMPORÁNEA,  
UNA ESTRUCTURA ENSALZADA POR EL ACABADO METALIZADO.



DEDA 9157 07 86



DEDA 9157 03 97



DEDA 9157 02 47



DEDA 9157 02 64



DEDA 9157 01 14



DEDA 9157 02 58



DEDA 9157 04 51



DEDA 9157 04 28



DEDA 9157 11 23



DEDA 9157 10 25



DEDA 9157 10 42



DEDA 9157 02 73



DEDA 9157 11 01



DEDA 9157 05 06



DEDA 9157 08 74



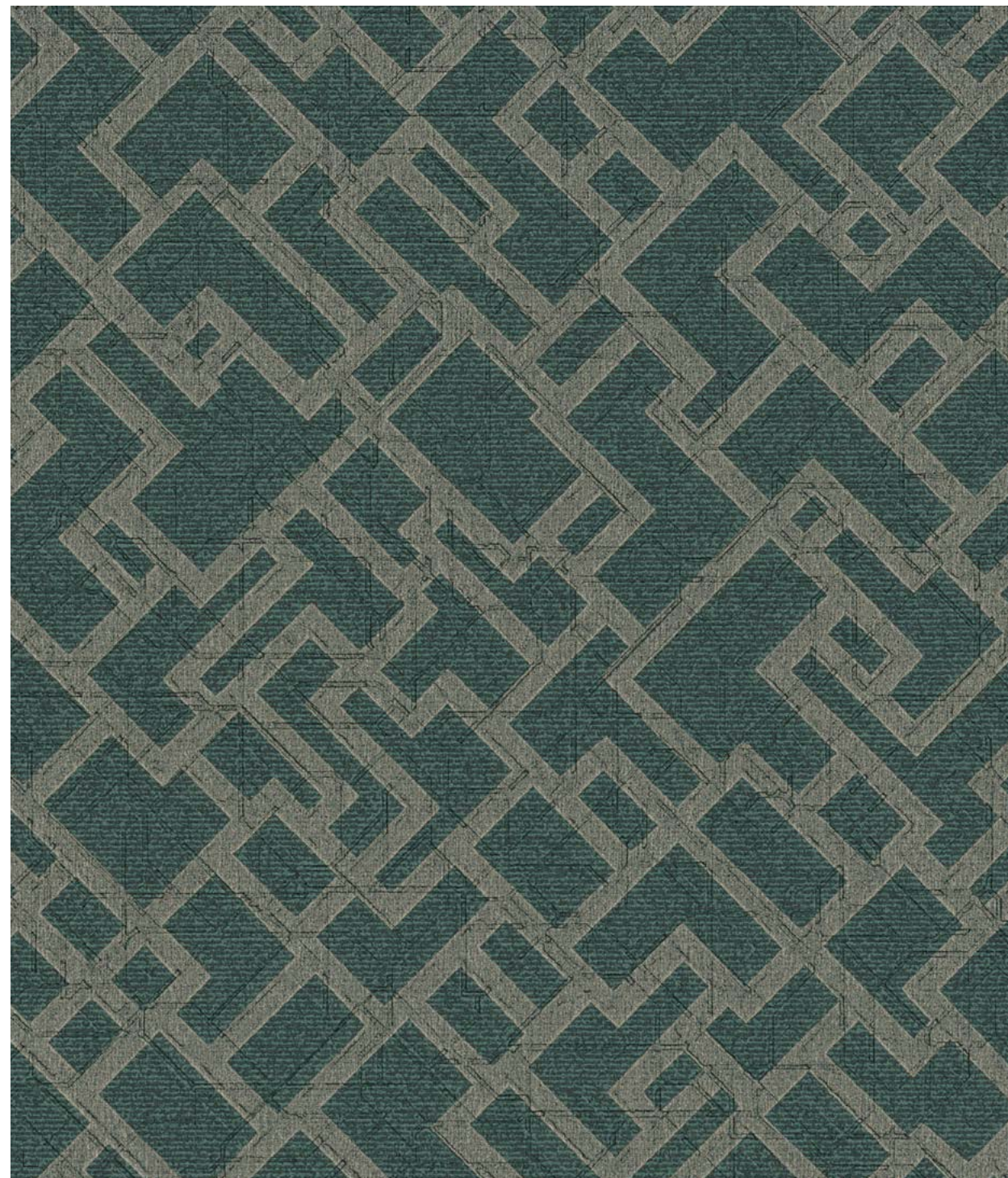
DEDA 9157 02 31



DEDA 9157 11 36



DEDA 9157 11 45



→ 0



DEDA 9157 04 12



DEDA 9157 10 34



DEDA 9157 11 94



DEDA 9157 04 12 & DEDA 9157 04 28



DEDA 9157 05 69



DEDA 9157 01 09